

Op. 9 $\lambda = \gamma = 6 \text{ slow count}$

Two staves of musical notation, almost completely obscured by dense, chaotic black scribbles and diagonal lines. Some faint notes and stems are visible through the ink.

$\gamma = 6 \text{ slow count}$
 $\lambda = 6 \text{ slow count}$

Two staves of musical notation. The first staff contains a series of vertical tick marks. The second staff has some scribbled-out sections and a few notes.

A large, dense circular scribble in the center of the page, obscuring any underlying notation. It is surrounded by some faint lines and marks.

Two staves of musical notation. The first staff has a large scribble on the right side. The second staff has some notes and stems.

Two staves of musical notation. The first staff has a large scribble on the right side. The second staff has some notes and stems.

Two staves of musical notation. The first staff has a large scribble on the right side. The second staff has some notes and stems.

Two staves of musical notation. The first staff has a large scribble on the right side. The second staff has some notes and stems.

A single staff of musical notation at the bottom of the page. Below the staff are several large black circles and some scribbles.

Q.9

Q.9 (2)

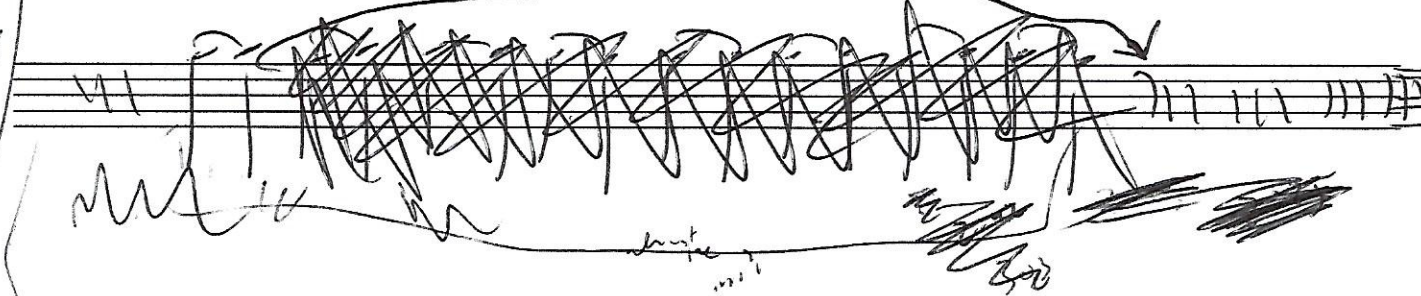
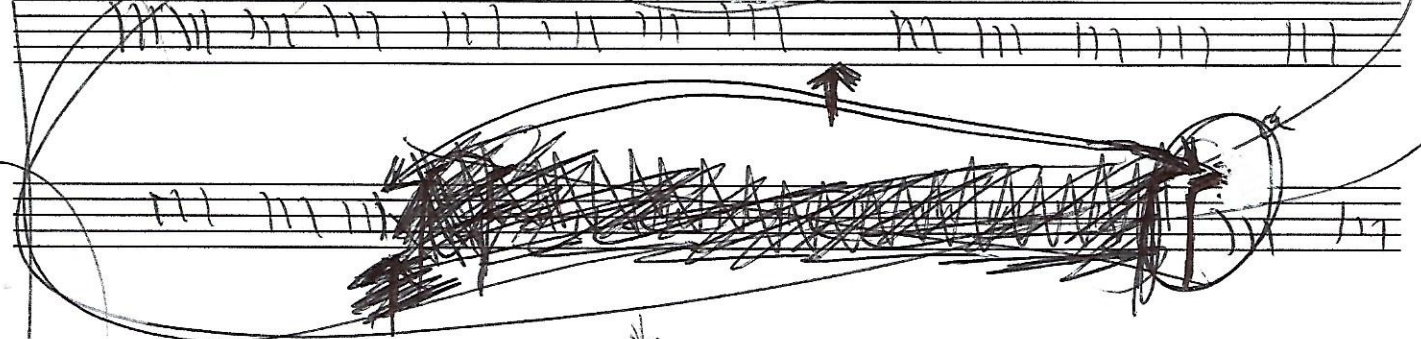
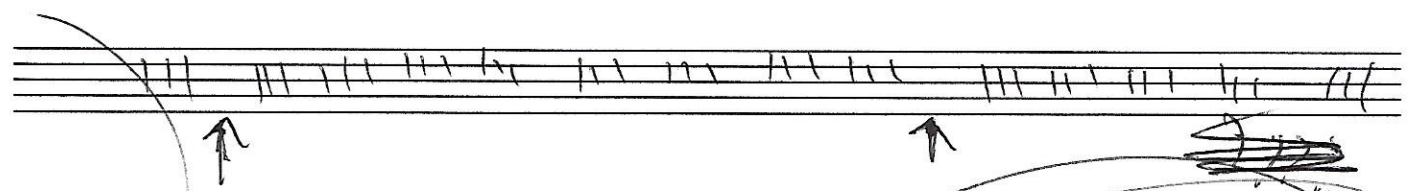
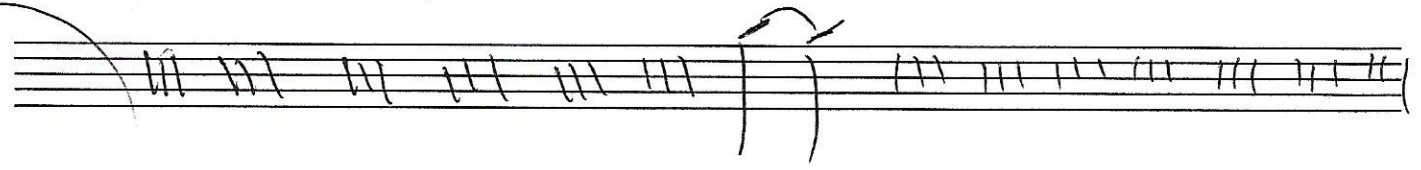
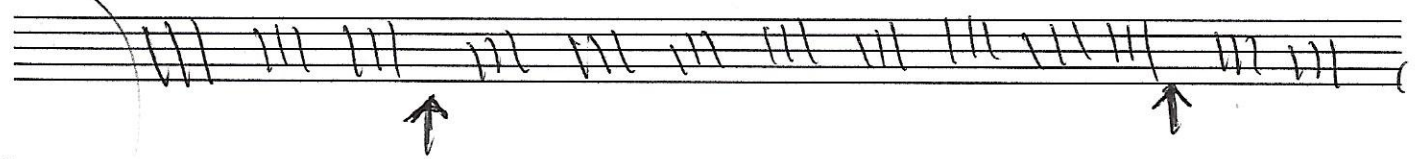
The image displays ten horizontal musical staves, each containing rhythmic notation represented by vertical lines of varying heights. The notation is organized into several measures across the staves. Annotations include:

- Upward-pointing arrows indicating specific notes or measures.
- Downward-pointing arrows.
- Curved arrows indicating phrasing or movement.
- A large, hand-drawn circle encompassing the first seven staves.
- A scribbled-out section on the right side of the third staff.
- A scribbled-out section at the top right of the page.

m

m

8/1



11
4

Handwritten scribbles and markings at the bottom of the page, including some illegible text.

Handwritten musical notation on a five-line staff. The notation consists of vertical strokes grouped in threes. An upward-pointing arrow is located below the staff. On the right side, there is a circled section of the notation with additional scribbles and a circled '4' above it.

Handwritten musical notation on a five-line staff. The notation consists of vertical strokes grouped in threes. An upward-pointing arrow is located below the staff. A large, dense scribble covers the lower portion of the staff, and another scribble is on the right side.

Handwritten musical notation on a five-line staff. The notation consists of vertical strokes grouped in threes. An upward-pointing arrow is located below the staff. Below the staff, there are several curved lines resembling musical notes or phrasing marks.

Handwritten musical notation on a five-line staff. The notation consists of vertical strokes grouped in threes. An upward-pointing arrow is located below the staff. This section contains multiple upward-pointing arrows and several large, dense scribbles. A large, sweeping circle encompasses the lower half of the staff.

Op. 9

Handwritten scribbles and notes at the top right.

This image shows a handwritten musical score consisting of 12 staves. The notation is highly abstract, featuring vertical lines and scribbles instead of standard musical notes. A large, hand-drawn circle encompasses the first seven staves. Several upward-pointing arrows are scattered across the staves, indicating specific points of interest or emphasis. The bottom of the page is heavily obscured by dark, dense scribbles and a large, dark rectangular block, possibly representing a redaction or a final, heavily edited section of the score. The overall appearance is that of a rough, conceptual sketch or a heavily revised manuscript.